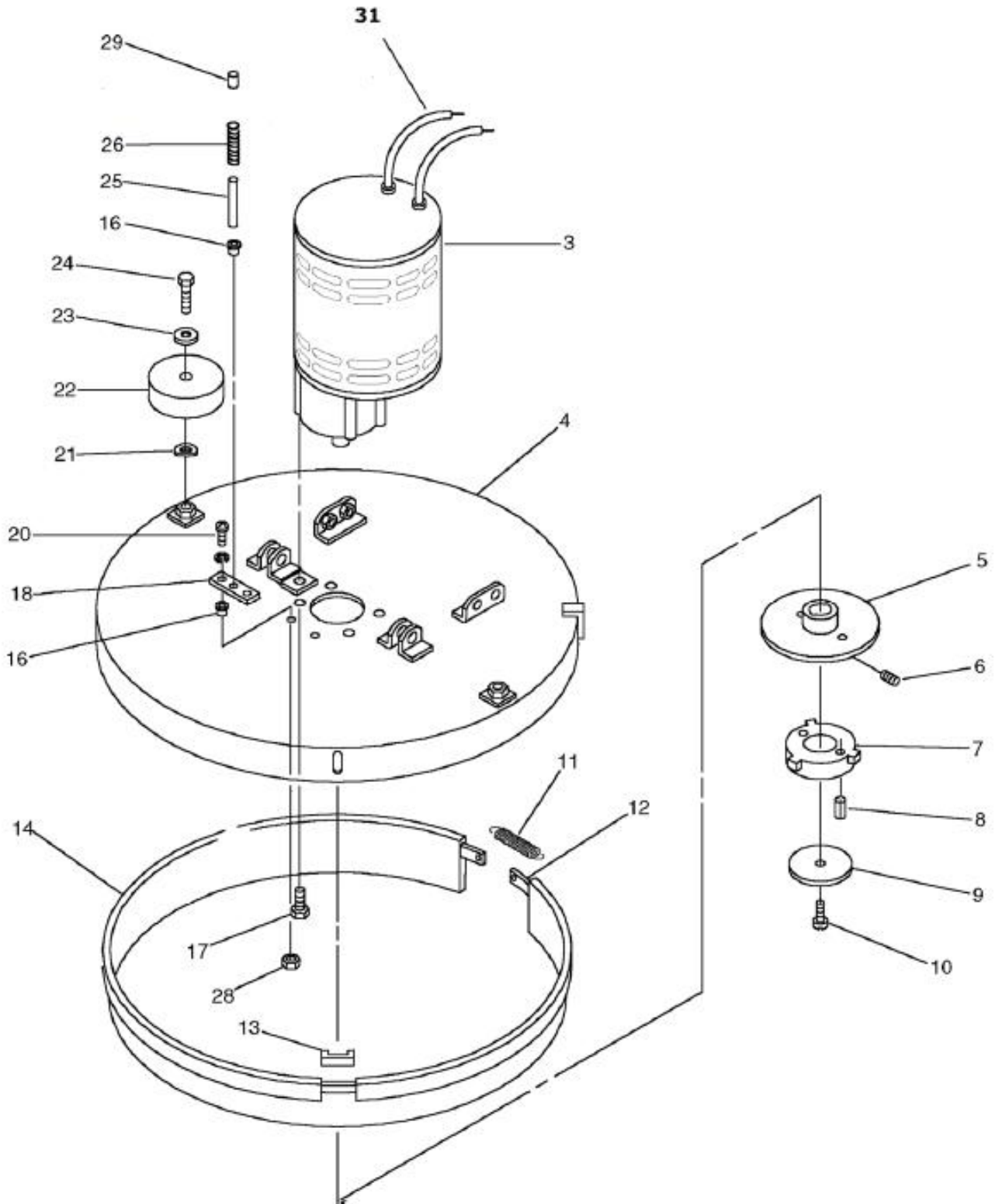


Tornado [Mar. 6, 2013]/Year 2000-Current: Schematics, Accessories, Brochures, Replacement & Optional Items/Automatic Scrubbers/20" & 24" EZ Floorkeepers/99105A 20" EZ BD Floorkeeper (w/ 2-12 V Batteries) - Series F/Brush Motor Cover Assembly



No.	Part No.	Qty.	Description
3	18076	1	Brush Motor (1HP)
4	18148	1	WELDMENT BRUSH COVER 20
5	18388	1	PLATE CLUTCH BACKING
6	14241	1	SCREW SET SOCK.
7	18389	1	PLATE BRUSH RETAINER
8	18390	2	PIN GROOVED
9	18640	1	PLATE BRUSH CLUTCH RETAI
10	18391	1	SCREW SOCK.HEAD CAP(NYLK
11	16472	1	SPRING EXTENSION
12	18159	1	BUMPER STRAP 20
13	17733	2	KEEPER
14	18161	1	BUMPER BRUSH COVER 20
16	16347	2	BEARING FLANGED BRONZE
17	16671	4	SCREW HEX HD CAP
18	18558	1	PLATE BEARING RETAINING
20	00600	2	SCREW SLO. RND HD MACH
21	07132	2	WASHER SPRING 3/8
22	30044	2	WHEEL BUMPER
23	03736	6	Washer
24	18130	2	SCREW HEX HD CAP
25	18165	1	PIN
26	06838	1	SPRING
28	02956	2	NUT HEX.LOCK(KEPS)
29	18593	1	CAP SCREW THREAD BLACK VINYL
NOT SHOWN	99262	1	Pad Holder (EZ 20)
31	16879	1	LABELWIRE MARKER POSITIVE