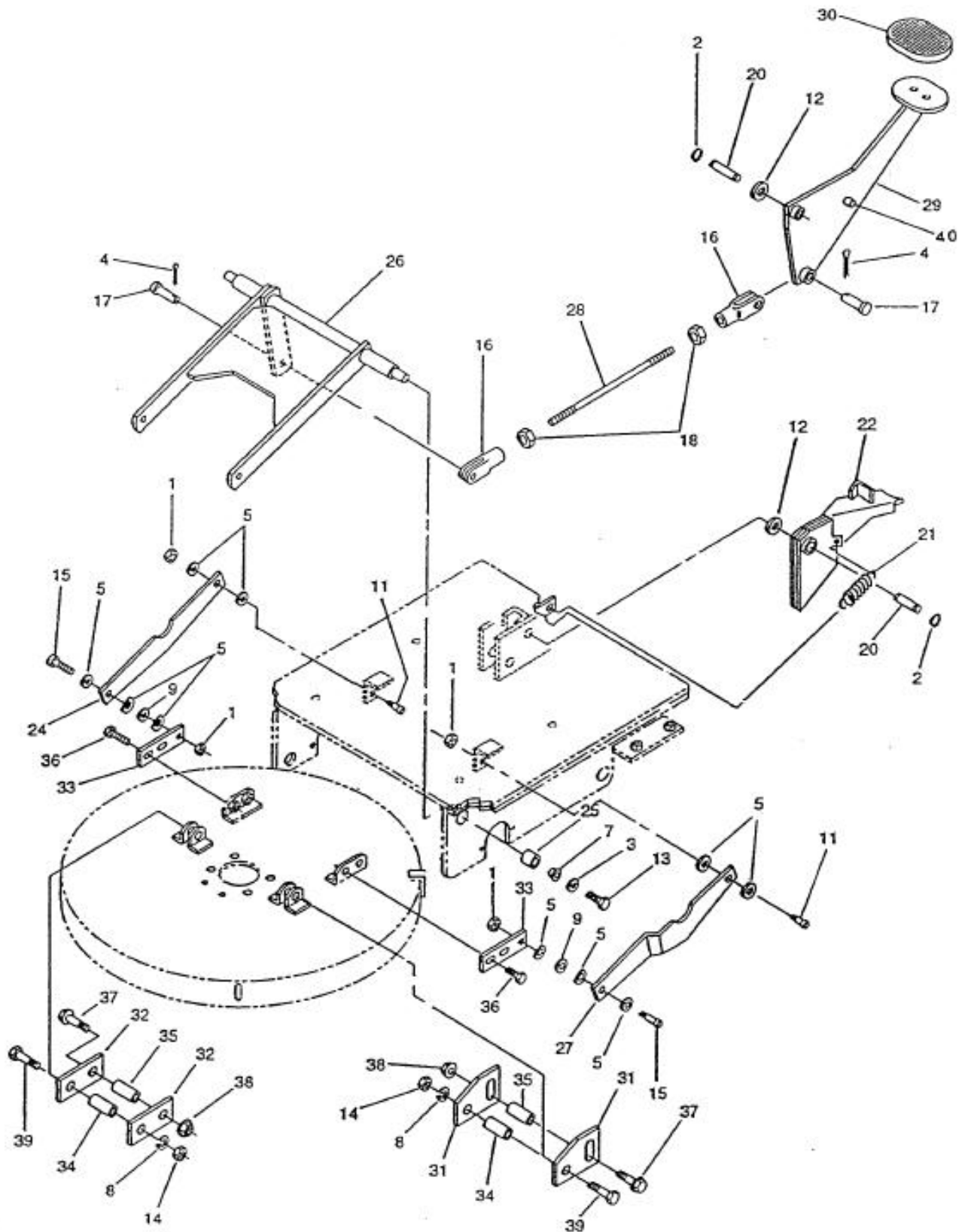


Tornado [Mar. 6, 2013]/Year 2000-Current: Schematics, Accessories, Brochures, Replacement & Optional Items/Automatic Scrubbers/20" & 24" EZ Floorkeepers/99105A 20" EZ BD Floorkeeper (w/ 2-12 V Batteries) - Series F/Brush Lift Assembly



No.	Part No.	Qty.	Description
1	01589	4	NUT FINISHED HEX W/ LOCTITE
2	03470	4	RING RETAINING EXT. E
3	03321	2	WASHER PLAIN .391ID X1.25X.125
4	03395	2	PIN COTTER
5	03736	11	Washer
7	03955	2	BUSHING FLANGED NYLON
8	06387	2	WASHER LOCK(I/T)1/2
9	07132	2	WASHER SPRING 3/8
11	15677	2	SCREW SOCKET HD SHOULDER
12	19616	4	WASHER PLAIN
13	16671	2	SCREW HEX HD CAP
14	16673	2	NUT FINISHED HEX
15	15677	2	SCREW SOCKET HD SHOULDER
16	18081	2	CLEVIS 3/8
17	18083	2	PIN CLEVIS
18	18093	2	NUT FINISHED HEX
20	18122	2	PIN
21	18952	1	SPRING EXTENSION
22	18758	1	WELDMENT BRUSH RELEASE
24	18166	1	ARM(20 R.H.) 030
25	18179	2	BEARING SPACER
26	18184	1	WELDMENT BRUSH LIFT 20
27	18185	1	ARM(20 L.H.) 030
28	18191	1	ROD LIFT(ZINC PL.SHAFT)
29	19076	1	WELDMENT BRUSH LIFT
30	19006	1	PAD MOTOR LIFT PEDAL
31	18835	2	PLATE BRUSH LIFT
32	18836	2	PLATE BRUSH LIFT
33	18837	2	PLATE BRUSH DECK LEVEL
34	18843	2	SPACER-1/2 DIA.
35	18844	2	SPACER 3/8 DIA.
36	18872	4	SCREW HEX FLANGE HEAD
37	18873	2	SCREW HEX FLANGE HEAD
38	18874	2	NUT HEX.FLNGD.LOCK(WHZ)
39	18875	2	SCREW HEX HD CAP
40	19078	1	PIN SPRING